

Comparison of Webtrader and AS2

Explore main FDA electronic submission methods, WebTrader and AS2, and pick the ideal solution for your clinical/pharmaceutical workflow

Webtrader

AS2

Use case



For low-volume and infrequent submissions

suitable for few dozen submissions per month



For frequent and/or high-volume submissions

can scale to virtually any schedule or rate of submissions

Deployment



Desktop-only

being a desktop app, needs a graphical desktop environment



Versatile

several options: on-premises, private-cloud, dedicated, etc.

Target OS



Windows-only

WebTrader is only compatible with Windows



No restriction

most AS2 products are compatible with a range of OSes and platforms

Access



Desktop-only

end users need direct access to installed desktop environment



No restriction

if web-hosted, end users can access through any browser or device

Security



Risk of data exposure

end users have log-in access to the desktop, which in turn has access to confidential submission source files



Higher data security

can be installed on a central server with secure access to data and controlled client/browser-based access by users

Automation



Not supported

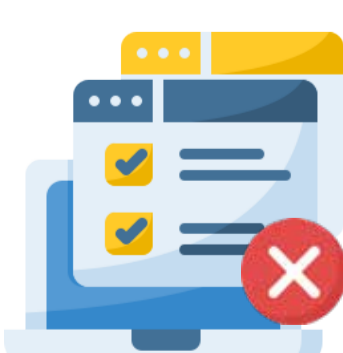
cannot be easily achieved; being UI-based, WebTrader requires manual operations



Supported

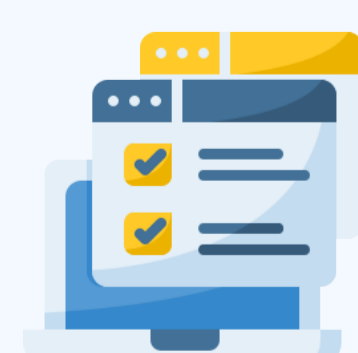
AS2 vendors offer automation through integrations like SFTP, REST APIs, webhooks, etc.

Customization



Not available

WebTrader is a one-size-for-all product from FDA



Highly customizable

may have extra features, or even custom release lines for regulatory submissions

Your Trusted AS2 Partner for FDA Regulatory Submissions over AS2 to the ESG

www.mftgateway.com

